

BETTER RETURNS



Buying a recorded ram



BEEF & LAMB

Why buy a recorded ram:

- High accuracy recorded rams consistently perform as predicted and therefore reduce risk
- Carcase trait EBVs can help you select rams who will produce more lambs hitting target specification
- High growth EBVs identify rams whose lambs reach slaughter weight quicker, reducing days to slaughter



Interpreting sale charts

Look for a ram that has been ultrasound scanned

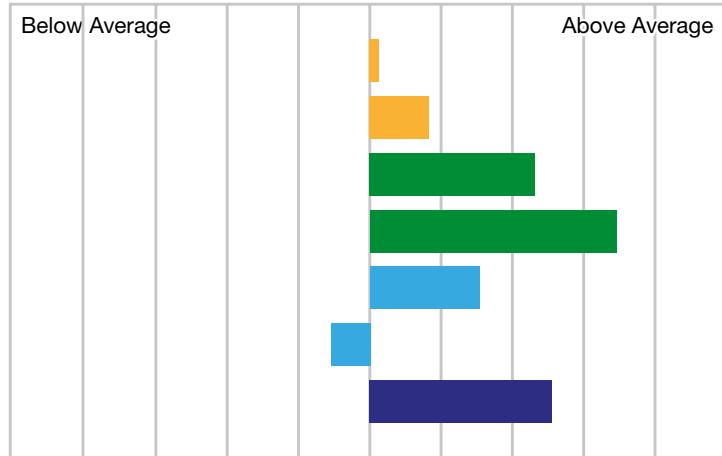
Stoneleigh 17ABC00001

Sire: Park PA00001

Dam: ABC0001122

Ultrasound Scanned: Yes

Date of Birth 14/12/2017



1. A ram with an EBV of +0.08 is estimated to produce ewes which produce 4 per cent more lambs than a ram with an EBV of 0

2. A ram with an EBV of +1.41 is estimated to produce ewes whose lambs are 0.70kg heavier at eight weeks of age than a ram with an EBV of 0

3. A ram with an EBV of +5.20 is estimated to produce lambs which are 2.60kg heavier at eight weeks of age than a ram with an EBV of 0

4. A ram with an EBV of +13.31 is estimated to produce lambs which are 6.65kg heavier at 21 weeks of age than a ram with an EBV of 0

5. A ram with an EBV of +3.98 is estimated to produce lambs with loin depths 1.99mm deeper at 21 weeks of age than a ram with an EBV of 0

6. A ram with an EBV of -1.00 is estimated to produce lambs with 0.50mm less fat across the loin at 21 weeks of age than a ram with an EBV of 0

7. The terminal index is designed to increase lean meat yield in the carcass, while limiting any associated rise in fatness

High-index animals are most fitting to this breeding goal

Accuracy values are percentage figures. The higher the figure, the more accurate the EBV. They indicate how much information has been used to calculate an animal's EBVs

Case studies

Examples of farms that have used EBVs for Better Returns

D Nelless – Northumberland



Duncan uses high-index rams, increasing his carcass value by over £4 per lamb

	Average carcass value	Average carcass weight	Average days to slaughter
Top 1% rams (avg. of 3 rams)	£74.94	18.5kg	107
Average index ram	£70.29	17.8kg	102

P&C Whitehouse – Gloucestershire



Philip and Charlie use high-index rams to get more lambs hitting target specifications

	Average carcass value	Lambs hitting abattoir spec	Average carcass weight	Average days to slaughter
Top 1% ram	£79.79	92%	20.0kg	119
Below average ram	£74.91	74%	19.0kg	122

How to find a recorded ram



- Look up the ram's ID online at **www.basco.org**
- Easy-to-read sale charts make identifying superior stock simple
- Ask the breeder for EBVs at sales and on farm

Seek out the standard

Using rams with superior genetics can increase flock profitability, regularly delivering an extra £3–£4 per lamb.

Look for the gold plus, gold and silver standard at sales today, indicating rams in the top 5, 10 and 25 per cent of their breed.



Invest in the best.

For more information contact:

AHDB Beef & Lamb

Better Returns Programme

Stoneleigh Park

Kenilworth

Warwickshire

CV8 2TL

Tel: 024 7647 8834

Email: brp@ahdb.org.uk

beefandlamb.ahdb.org.uk

Signet
Signet Breeding Services

©Agriculture & Horticulture Development Board 2018.
All rights reserved.